



HOUSE & LAND PACKAGE

IBIZA AZURE

FROM \$528,990

Lot 166 Swirl Link,  
The Reef, Two Rocks

Lot size 400m<sup>2</sup>

Like the beautiful reef that sits just off shore, The Reef at Two Rocks is a vibrant community teeming with natural beauty, from the calm blue waters close by to the parklands with more than enough space to swing a cricket bat.

**Luxury features include:**

Quality double brick construction; acrylic render to elevation; Caesarstone benchtops to kitchen; 900mm SMEG professional cooker and rangehood; soft close cupboard doors and drawers; high quality fittings and fixtures throughout; semi frameless shower screens; site works allowance; fencing and landscaping; and much more.

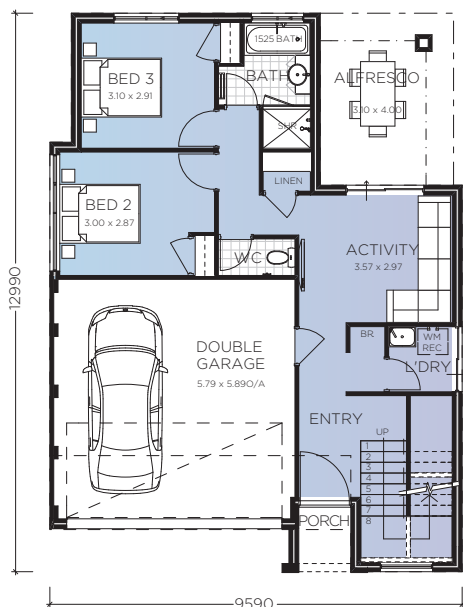
Ground Floor	69.16 m <sup>2</sup>
First Floor	90.97 m <sup>2</sup>
Garage	33.11 m <sup>2</sup>
<b>Total Area</b>	<b>219.88 m<sup>2</sup></b>

**FIONA MONTELEONE**  
Design & Building Consultant

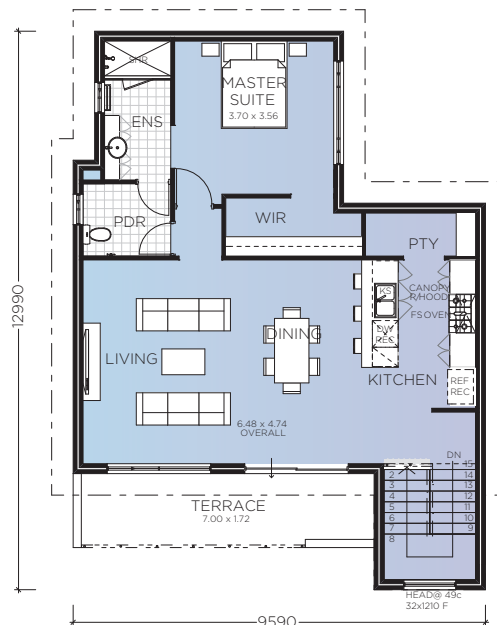
191 Great Eastern Hwy Belmont, WA

T 08 9463 7222 | M 0408 790 277  
fiona.monteleone@switchhomes.net.au

Photos are for illustration purposes only. The land offered for purchase with this package is done so in conjunction with the land developer and/or seller of the land to facilitate a house and land package. Switch Homes does not own the land and a separate contract for sale for the land will be prepared by the seller. The advertised price is subject to change should any changes be made to the house design, a provisional sum allowance for siteworks is included and subject to a licensed survey and engineers report.



GROUND FLOOR PLAN



FIRST FLOOR PLAN