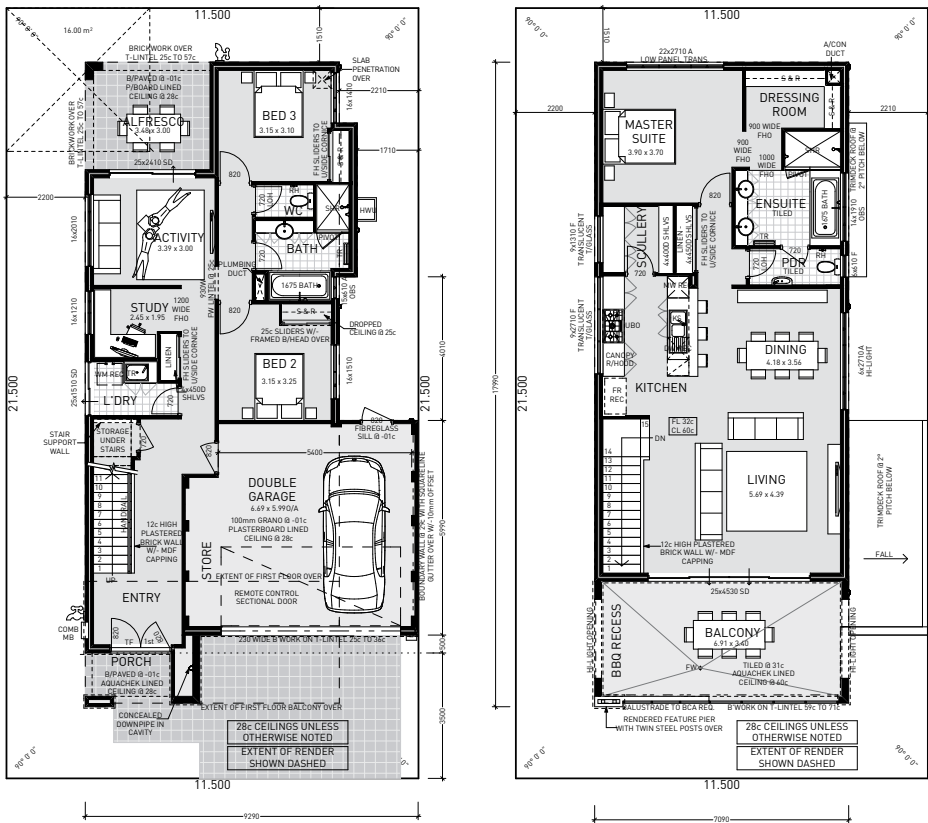




## HOUSE & LAND PACKAGE

SUNSET EXCLUSIVE

FROM 926,000



### Port Coogee

Lot size 247.25 m<sup>2</sup>

This unique estate includes a world-class marina, right on the edge of the Indian Ocean - and all just 5 minutes drive from the City of Fremantle.

#### Luxury features include:

Stone benchtops to kitchen and large scullery, 900mm Ariston freestanding oven, undermount sink to kitchen, spacious balcony with glass balustrade, stunning ensuite including bath.

Ground Floor 134.91 m<sup>2</sup>

First Floor 126.92 m<sup>2</sup>

**Total Area 261.83 m<sup>2</sup>**

**FIONA MONTELEONE**  
Design and Building Consultant

191 Great Eastern Hwy Belmont, WA

T 08 9463 7222 | M 0408 790 277  
fiona.montealeone@switchhomes.net.au

Limited House and Land packages available at this price, contact Fiona today for more information to secure your new dream home.

Sales Enquiries 0408 790 277

switchhomes.net.au

**SWITCH**  
FEEL AT HOME

Disclaimer: This information is accurate at time of printing. Photos are for illustration purposes only and product may vary slightly depending on supply. All details are to be confirmed during consultation with your Sales consultant. The land offered for purchase with this package is done so in conjunction with the land developer and/or seller of the land to facilitate a house and land package. Switch Homes does not own the land and a separate contract for sale for the land will be prepared by the seller. The advertised price is subject to change should any changes be made to the house design, a provisional sum allowance for siteworks is included and subject to a licensed survey and engineers report.