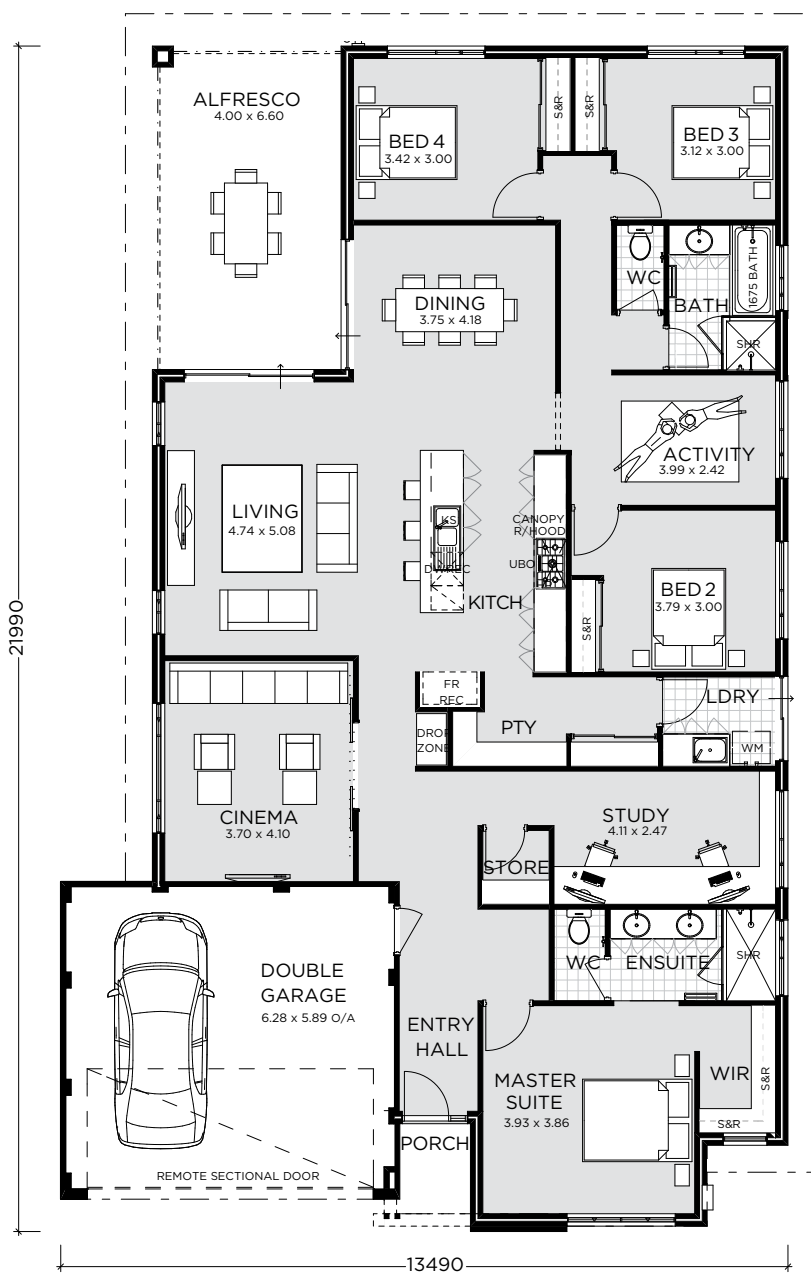




HOUSE & LAND PACKAGE



PORTSEA EXCLUSIVE
FROM \$481,671

Lot 884 Dooragan Street,
Baldvis Parks

Lot size 435 m²

At Baldvis Parks you can live in a beautiful new home surrounded by parks and natural bushland, yet all just a short distance from great schools, local and major shopping centres, plus a range of quick and easy transport options.

Luxury features include:
Quality double brick construction; Acrylic render to elevation; Stone benchtops to kitchen; 900mm free standing professional cooker; Soft close cupboard doors and drawers; Semi frameless shower screens; Site works allowance; and much more.

Ground Floor	204.04 m ²
Garage	36.19 m ²
Porch	2.63 m ²
Total Area	268.87 m²

GAVIN CLINTON-BURNS
Design and Building Consultant
191 Great Eastern Hwy Belmont, WA
T 08 6274 7333 | M 0409 450 665
gavin.clinton-burns@switchhomes.net.au

Sales Enquiries 0409 450 665

switchhomes.net.au

SWITCH
FEEL AT HOME

All the above include estimated site costs and Bushfire Rating allowances, if you can please add that into the inclusions section on the artwork