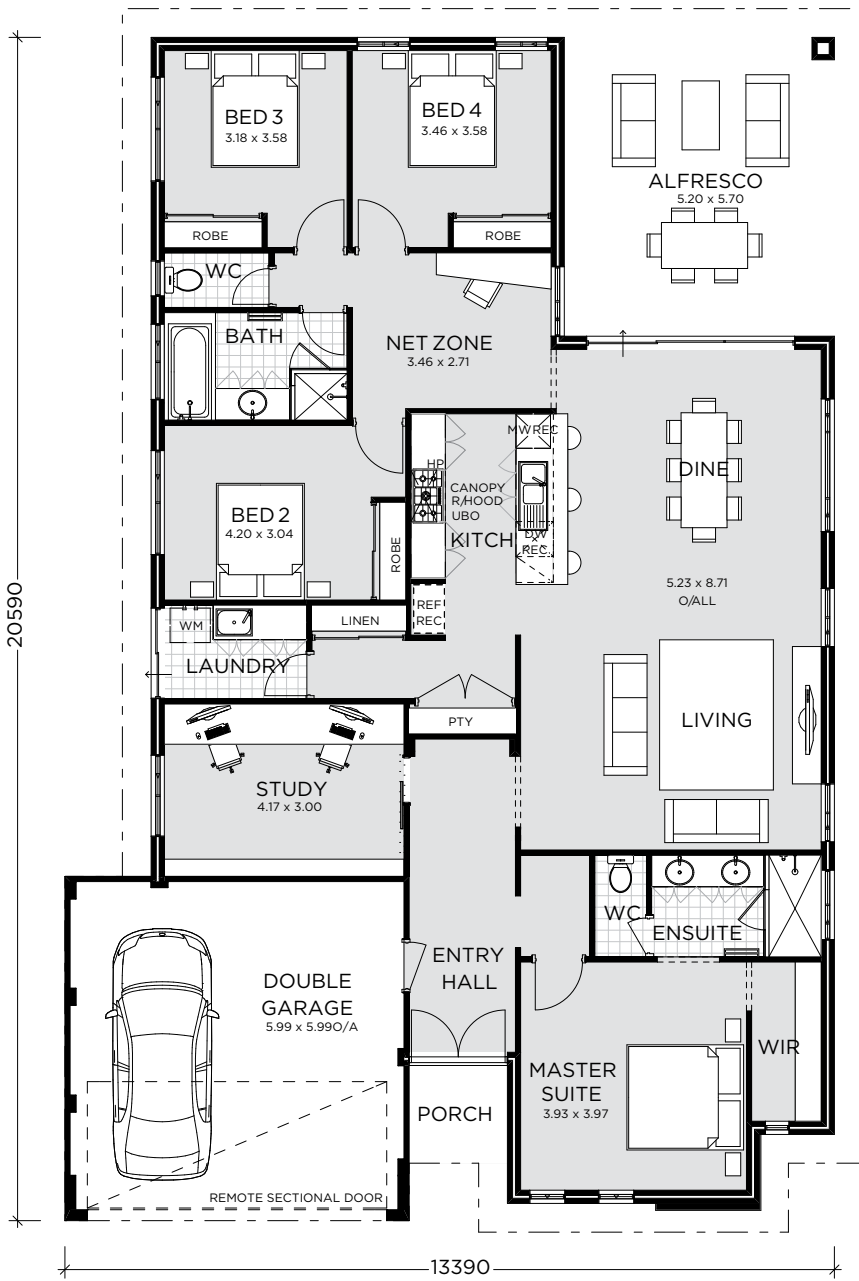




HOUSE & LAND PACKAGE



LEXINGTON EXCLUSIVE
FROM \$540,835

Lot 562 Trent Street,
The Crescent, Viveash

Lot size 450 m²

Located just metres from the banks of the iconic Swan River, The Crescent promises the perfect canvas on which to build the home you have always dreamt of. Situated just 20km from the Perth CBD and on the doorstep of the vibrant Guildford and Midland hubs, a huge range of facilities are already established nearby with many more to come in the near future.

Luxury features include:

Quality double brick construction; Acrylic render to elevation; Stone benchtops to kitchen; 900mm free standing professional cooker; Soft close cupboard doors and drawers; Semi frameless shower screens; Site works allowance; and much more.

Ground Floor	204.04 m ²
Garage	36.19 m ²
Total Area	268.87 m²

MARK STILLMAN
Design and Building Consultant
191 Great Eastern Hwy Belmont, WA
T 08 9471 5418 | M 0419 968 085
Mark.Stillman@switchhomes.net.au

Sales Enquiries 0419 968 085

switchhomes.net.au

SWITCH
FEEL AT HOME

All the above include estimated site costs.